



Barbara Bosworth & Emily Sheffer: In Time

June 23 - August 18, 2023

Contact: Olivia McManus, Director

Email: olivia@rivalryprojects.com

www.rivalryprojects.com

Rivalry Projects is excited to present *In Time*, an exhibition with Barbara Bosworth and Emily Sheffer. Longstanding collaborators and friends, Bosworth and Sheffer document the vastness and uncertainty of our natural world to examine creation, corporeality, and our tenuous relationship with a changing environment.

The presentation, their first with the gallery, will be on view from June 23-August 18, 2023. Join us for an Opening Reception for this exhibit on Friday, June 23, 2023 from 5:00-9:00 PM. The artists will also be giving an artist talk discussing the work in this exhibition on Saturday, June 24, 2023 from 11:00AM-12:00PM. This exhibition will be on view in tandem with an exhibition of photographs by David Hilliard in Rivalry's Project Space.

The sea - its serenity, volatility, and awe-inspiring ability to transform sky, water, and light - has forever captivated Barbara Bosworth. The works in this exhibition depict the sea, its emotion, and unbridled wildness. Using a large-format camera the artist trains her lens not only on the sea's movements, but where the sky and water meet. In conversation with Romantic artists such as Caspar David Friedrich and J.M.W. Turner, Bosworth's photographs append a mystical sensibility to a place she pins as "Elsewhere;" a place beyond, blurred in the confluence of heaven and earth. Bosworth's photographs seek an ineffable truth about the sea, paying special attention to its ecosystems and teeming life. By turns plaintive, romantic, and atmospheric, Bosworth's photographs read as poetic records of the natural world.

Evening surf, sunset, (2002), shows a blue, gray, and pink mottled, evening sky. The composition is almost evenly split between water and sky, with the horizon lying along the picture's midline and bowing up ever-so slightly, a gesture that heightens the turbulent waves that race and froth away at the picture's lower edge. The power of Bosworth's practice in this instance is in her ability to place the viewer directly within a moment. For *Evening surf, sunset*, the photograph's size and descriptive nature allows viewers to probe seascape and cloud formations at length, all the while our feet can almost feel rushing away from wave-churned sand.

Emily Sheffer's photographs use clay and landscape as an entry point through which creation myths can be examined and unpacked. Driven by her interests in ancient visual culture, geology, and pottery, her images create a photographic experience that examines the earth itself as life-giving matter. Sheffer's photographs in conversation with -and contrasted against-



Bosworth's serve to remind viewers of the genesis of the Earth; of how mountainous glaciers carved today's canyons, and how waves of molten rock shaped the face of our planet and birthed the oceans.

Rock and Clay, (2022), offers us a greyscale portrait of disparate masses of earth meeting. At center the titular rock is scratched, gouged, and -like a boulder returning to earth from a pyroclastic explosion- is planted firmly into a field of pitted clay. The waves of clay undulate and ripple around the rock, each of their strata intimately conjoined, but never coalescing. Outcroppings within the picture pitch pockets of shade diagonally down the clay bed; this light becomes the only inference of time within the picture, seating clay and rock in the light of geological time.

Barbara Bosworth + Emily Sheffer: In Time evokes calm introspection, romance, and poetry, while these photographs probe a deeply unknowable and overpowering natural force, a contradiction that has drawn people to shorelines for millennia.

About the Artists

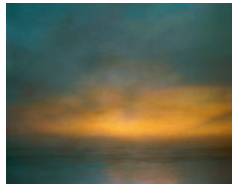
Barbara Bosworth (b. 1953) is a photographer whose large-format images explore both overt and subtle relationships between humans and the rest of the natural world. Whether chronicling the efforts of hunters or bird banders or evoking the seasonal changes that transform mountains and meadows, Bosworth's caring attention to the world around her results in images that similarly inspire viewers to look closely.

Bosworth grew up in Novelty, Ohio. She currently lives in Massachusetts, where she is professor emeritus of photography at the Massachusetts College of Art and Design in Boston. Bosworth's work has been widely exhibited, notably in retrospectives at the Denver Art Museum in Colorado, Peabody Essex Museum in Salem, Massachusetts, the Smithsonian American Art Museum in Washington, D.C., and the Phoenix Art Museum in Arizona. Her previous publications include, *The Heavens* (Radius Books, 2018), *The Meadow* (Radius Books, 2015), *Natural Histories* (Radius Books, 2013), *From Where the Sun Now Stands* (Dust Collective, 2019), *Behold* (Datz Press, 2014), *Trees: National Champions* (MIT Press; Center for Creative Photography, University of Arizona, 2005).

Emily Sheffer (b. 1993) is a photographic artist, educator, and book designer. She is the founder of [Dust Collective](#), a handmade photography book publisher, and has published over a dozen artist books. She earned her BFA in Photography with Departmental Honors from The Massachusetts College of Art and Design in 2015. In 2019, Maine Media Workshops invited Emily to be their book-artist-in-residence. Emily graduated in 2022 from The University of Hartford Photography MFA program, where she was awarded the Merit Scholarship. In 2022, Emily completed a residency with Tusen Takk Foundation with collaborator Barbara Bosworth. She currently works as a studio director and visiting professor of photography in New England.

Barbara Bosworth & Emily Sheffer: In Time

June 23 - August 18, 2023



Barbara Bosworth
Elsewhere, VII, 2002
 Archival inkjet print
 32 x 40 inches
 Edition 1/5, 2AP

\$ 12,000



Barbara Bosworth
Moon setting into fog bank over Cape Cod Bay, morning of total lunar eclipse, 2007
 Archival inkjet print
 32 x 40 inches
 Edition 1/5, 2AP

\$ 12,000



Barbara Bosworth
Elsewhere, V, 2003
 Archival inkjet print
 32 x 40 inches
 Edition 1/5, 2AP

\$ 12,000



Emily Sheffer
Gathering Clay, 2022
 Archival inkjet print
 30 x 36 inches
 Edition 1/5, 2AP

\$ 5,000



Emily Sheffer
Vessel, II, 2022
 Archival inkjet print
 20 x 16 inches
 Edition 1/7, 3AP

\$ 2,500

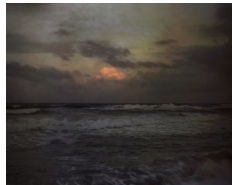


Barbara Bosworth

Cloudy, windy, high tide, high surf, dark coming on, Newcomb Hollow, 2020

Archival inkjet print
20 x 16 inches
Edition 1/7, 3AP

\$ 4,500



Barbara Bosworth

Evening surf, sunset, 2002

Archival inkjet print
40 x 50 inches
Edition 1/3, 1AP

\$ 18,000



Emily Sheffer

Outcrop, 2022

Archival inkjet print, mounted to dibond
20 x 16 inches, each
20 x 112 inches, overall
Edition 1/3, 1AP

\$ 7,500



Barbara Bosworth

Full moon night, Newcomb Hollow, 1997

Archival inkjet print
32 x 40 inches
Edition 1/5, 2AP

\$ 12,000

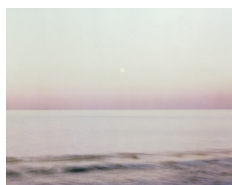


Emily Sheffer

Rock and Clay, 2022

Archival inkjet print
20 x 16 inches
Edition 1/7, 3AP

\$ 2,500



Barbara Bosworth

Sunset with moon rising, Atlantic Ocean, 1990

Archival inkjet print
32 x 40 inches
Edition 1/5, 2AP

\$ 12,000.00



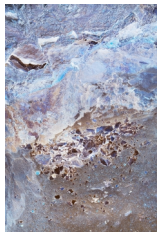
Emily Sheffer
Vessel, I, 2022
Archival inkjet print
20 x 16 inches
Edition 1/7, 3AP

\$ 2,500



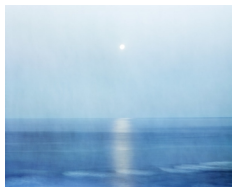
Barbara Bosworth
Ted's sandcastle, Newcomb Hollow, 1989
Archival inkjet print
16 x 20 inches
Edition 1/7, 3AP

\$ 4,500



Emily Sheffer
Opalescent, I, 2022
Archival inkjet print
48 x 32 inches
Edition 1/5, 2AP

\$ 5,000



Barbara Bosworth
Moon rising over the Atlantic, 1990
Archival inkjet print
32 x 40 inches
Edition 1/5, 2AP

\$ 12,000